

INSTALLATION INSTRUCTIONS FOR SR 2-LEVER CONTROL

The SR 2-lever control has one lever for "Reverse" and one lever for operating the speed and stop provided with adjustable brakes.

The control cables should be installed as directly as possible to the respective levers. The cable bends should have a minimum radius of 250 mm (10").

INSTALLING THE SR-CONTROL

The SR-control can be installed on the starboard or port side. Sufficient space (approx. 90°) should be left for manoeuvring the levers. See Fig. A. On the rear side of the panel there is place for the movements of the levers. See Fig. B. The thickness of the panel should be approx. 25 mm (1"). If necessary spacers should be used. See Fig. C. Drill a 36 mm (1.42") hole in the panel for the control attachment. Remove the attaching plate from the control. Use the attaching plate as a template and drill the four holes, diam. 5.2 mm (0.2"). Place the attaching plate on the rear side of the panel in such a position that the cables have maximum possible bending radius. Pull the control and attaching plate together by means of the four nuts. The attaching plate should be screwed securely in the panel by means of two 1/4" screws. The levers can be installed in eight different positions. The direction of the control cables can be altered somewhat by being able to move the cable holders to the next adjacent hole.

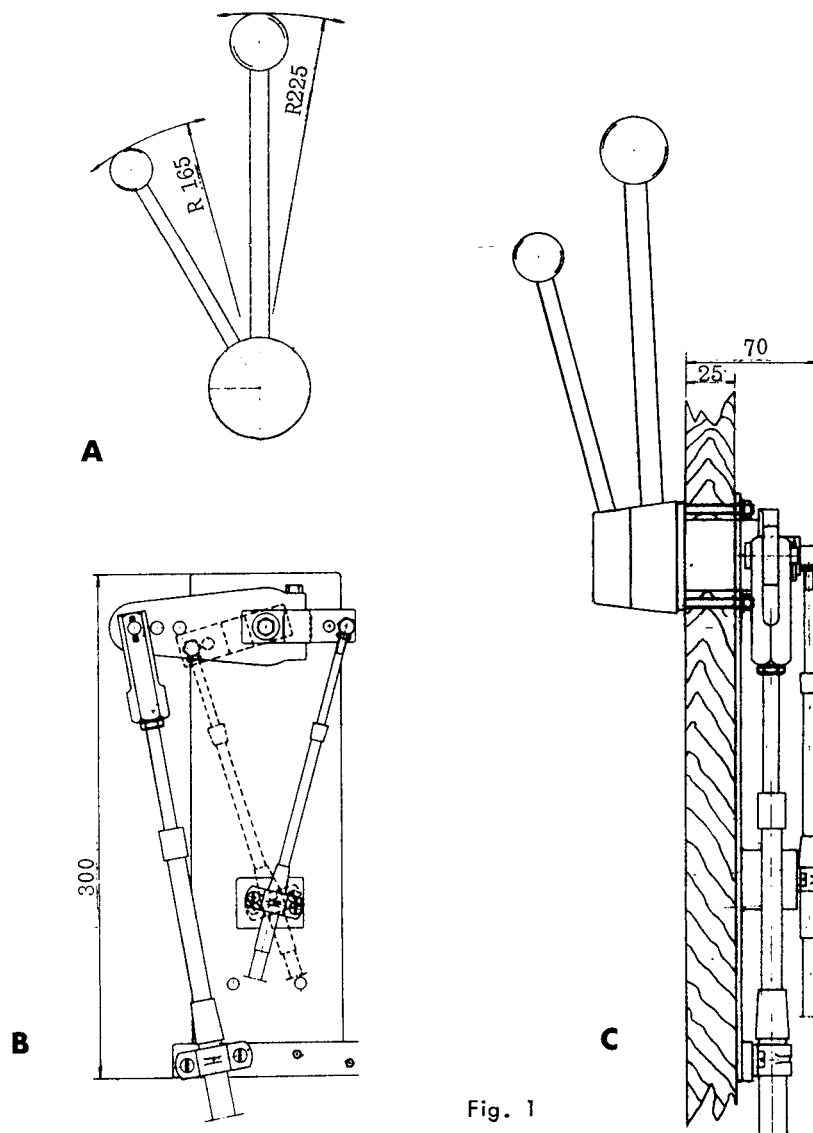


Fig. 1

Svensk text, andra sidan

AB VOLVO PENTA

Box 392, 401 26 Göteborg 1, Sweden